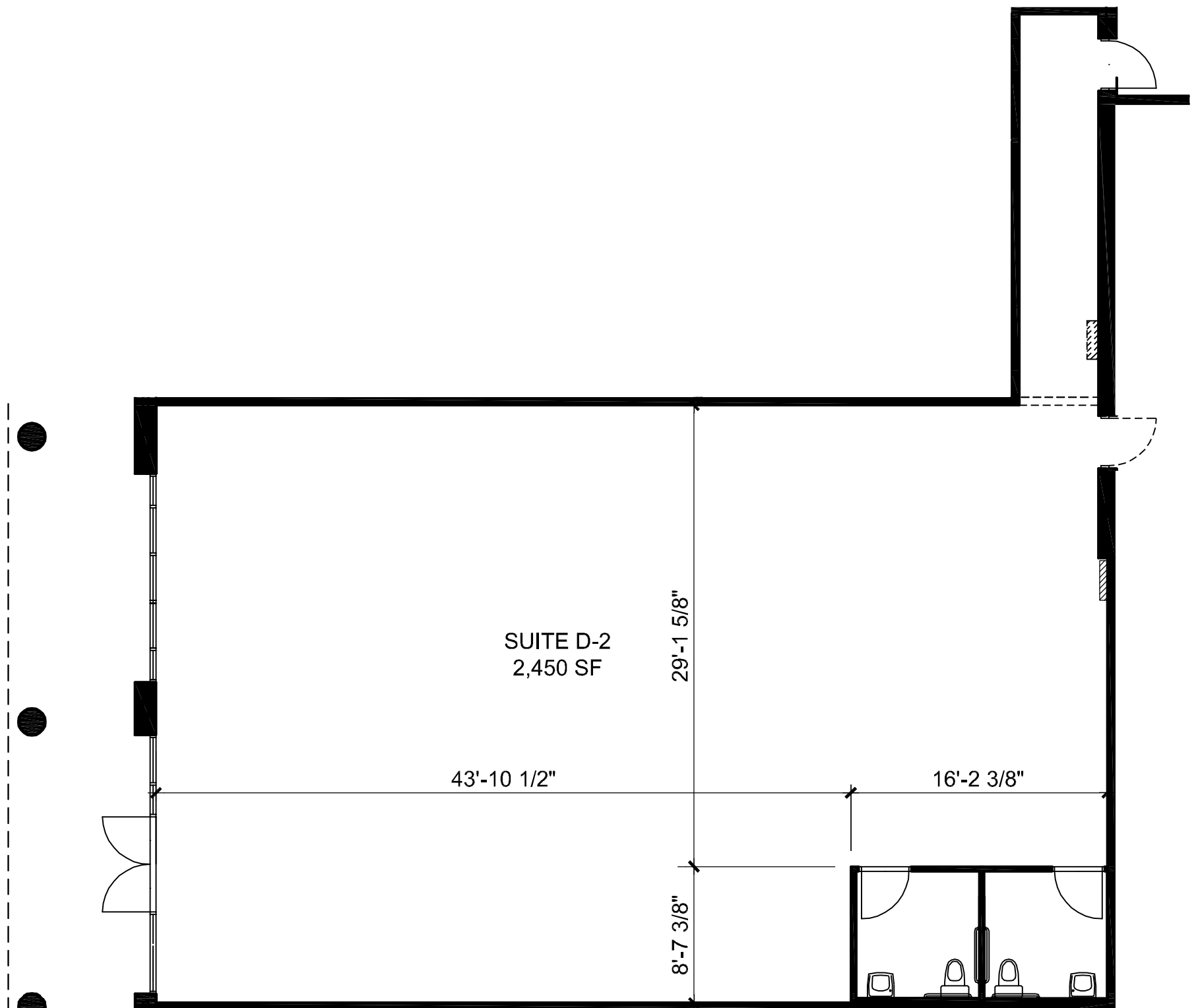
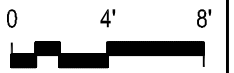


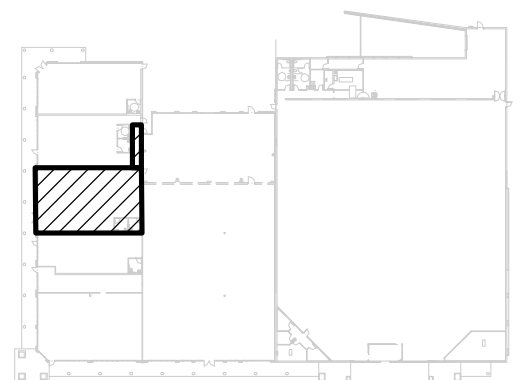
WEST BLUFF

5201 Ouray NW, Albuquerque NM, 87120



SUITE INFORMATION

GLA (GROSS LEASABLE AREA): **2,450 SF**
CEILING HEIGHT: **11'-0"**
HEIGHT TO TOP OF STRUCTURE: **18'-0"**
ELECTRICAL SERVICE SIZE: **400A**
SIZE OF WATER LINE: **1-1/2"**
SIZE OF WASTE LINE: **4"**
SIZE OF BACK DOOR: **3'-0"W x 7'-0"H**
HVAC: **(SHARED) 8-1/2 Ton RTU, Gas**
Heat



KEYPLAN



BUILDING

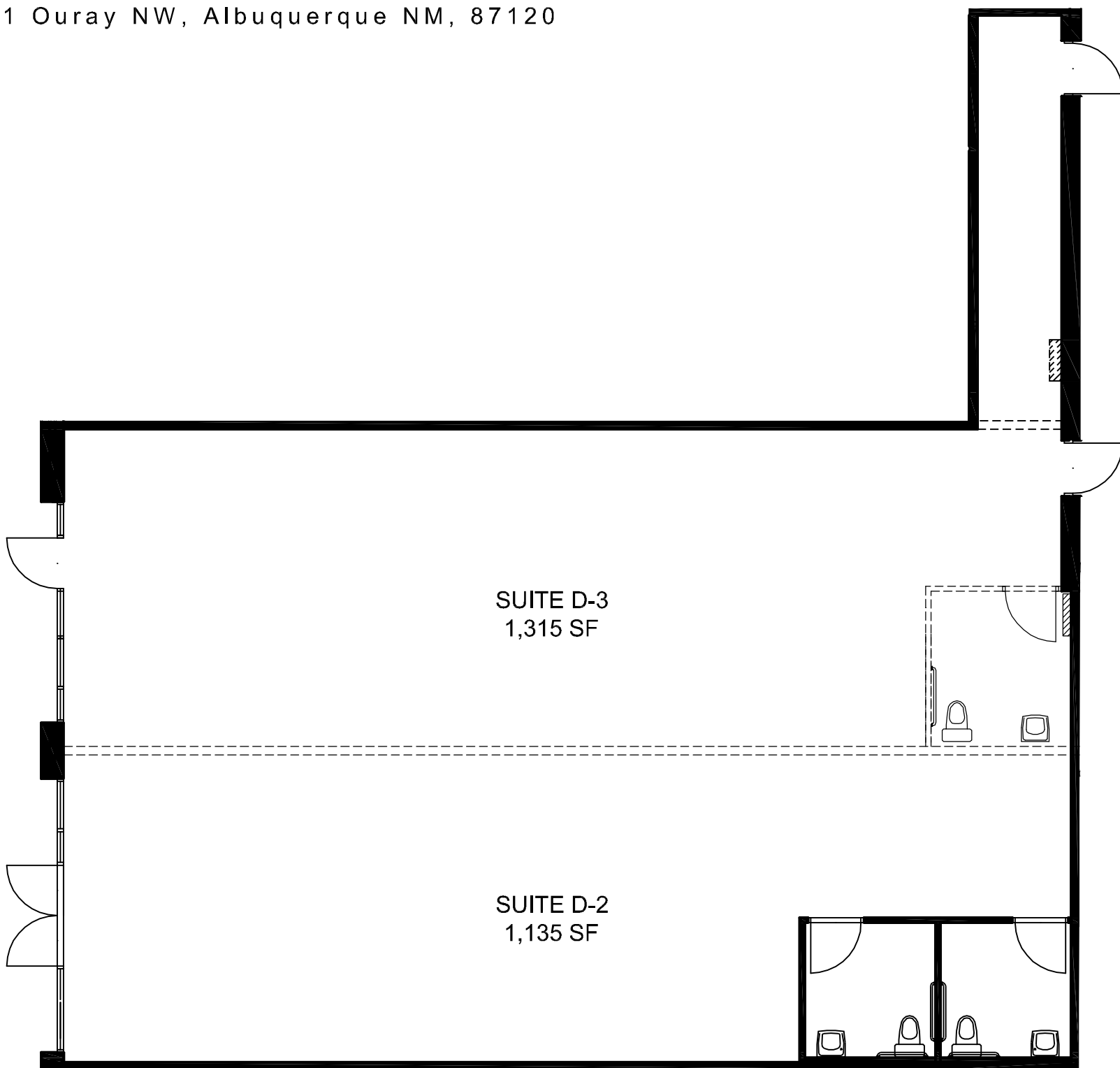
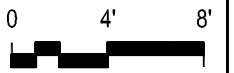
1 SUITE:D-2

Geltmore LLC

6211 San Mateo Blvd. NE, Suite 130
Albuquerque, NM 87109-3534
505-294-8625 www.geltmore.com

WEST BLUFF

5201 Ouray NW, Albuquerque NM, 87120



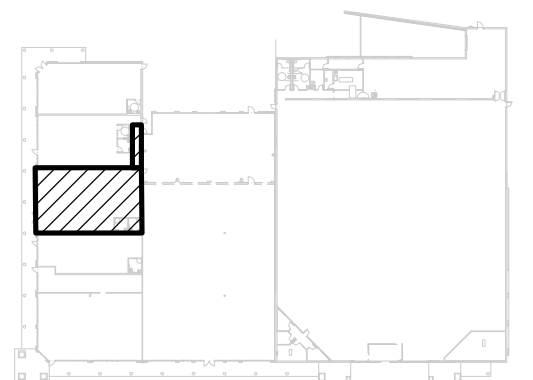
SUITE INFORMATION (POSSIBLE DIVISION)

SUITE D-2

GLA (GROSS LEASABLE AREA): 1,135 SF
 CEILING HEIGHT: 11'-0"
 CLEAR HEIGHT: 17'-6"
 HEIGHT TO TOP OF STRUCTURE: 18'-8"
 ELECTRICAL SERVICE SIZE: 200A
 SIZE OF WATER LINE: 1-1/2"
 SIZE OF WASTE LINE: 4"
 SIZE OF BACK DOOR: None
 SIZE OF FRONT DOOR: 1 Pair of 3'-0"W X 7'-0"H
 SIZE OF SIDE DOOR: None
 SIZE OF TRUCK DOOR: None
 HVAC: 5 Ton RTU, Gas Heat

SUITE D-3

GLA (GROSS LEASABLE AREA): 1,315 SF
 CEILING HEIGHT: 11'-0"
 CLEAR HEIGHT: 17'-6"
 HEIGHT TO TOP OF STRUCTURE: 18'-8"
 ELECTRICAL SERVICE SIZE: 200A
 SIZE OF WATER LINE: 1-1/2"
 SIZE OF WASTE LINE: 4"
 SIZE OF BACK DOOR: (2) 3'-0"W X 7'-0"H
 SIZE OF FRONT DOOR: 3'-0"W X 7'-0"H
 SIZE OF SIDE DOOR: None
 SIZE OF TRUCK DOOR: None
 HVAC: 5 Ton RTU, Gas Heat



KEYPLAN



BUILDING

1 SUITE: D2 & D3

Geltmore LLC

6211 San Mateo Blvd. NE, Suite 130
 Albuquerque, NM 87109-3534
 505-294-8625 www.geltmore.com